



## FEATURES

- Smooth side and lighter construction compared to fin type LEDs
- For use in a variety of indoor and outdoor applications\*
- Select models available with Energy Star qualification and UL wet location listing
- Dimmable down to 10% of total light output\*\*
- Lasts up to 10X longer than traditional halogen lamps
- New ECO PAR lasts up to 15X longer than traditional halogens
- Advanced optics and thermal management
- Available in 3000K or 5000K
- Contains NO mercury



**NEW**

PAR38 ECO



PAR38

PAR30  
LONG NECK



	Item #	Code	Watts	Volts	Base	Beam Spread	CRI	CCT (Kelvin)	Initial Lumens	CBCP (cd)	Avg. Rated Life	MOL in.	Equiv Wattage	Energy Star	Dimmable
PAR16	LP16/6/830/FL/D	79987	6	120V	E26	38°	82	3000	380	1063	40,000	2.8"	35	Y	Y
	LP16/6/850/FL/D	79988	6	120V	E26	38°	81	5000	360	1100	40,000	2.8"	35	-	Y
PAR20	LP20/8/830/NFL/D	79635	8	120V	E26	25°	80	3000	470	1626	40,000	3.5"	45	Y	Y
	LP20/8/850/NFL/D	79636	8	120V	E26	25°	80	5000	470	1954	25,000	3.5"	45	-	Y
PAR30	LP30/14/830/FL/D	79637	14	120V	E26	40°	80	3000	850	1332	25,000	3.5"	75	Y	Y
	LP30/14/850/FL/D	79638	14	120V	E26	40°	80	5000	850	1656	25,000	3.5"	75	-	Y
PAR30 LONG NECK	LP30L/14/830/FL/D	79639	14	120V	E26	40°	80	3000	850	1648	25,000	4.7"	75	Y	Y
	LP30L/14/850/FL/D	79640	14	120V	E26	40°	80	5000	850	1656	25,000	4.7"	75	-	Y
PAR38 ECO	LP38/14/830/FL/D <b>NEW!</b>	78485	14	120V	E26	40°	80	3000	980	1900	25,000	4.8"	75	-	Y
	LP38/14/850/FL/D <b>NEW!</b>	78486	14	120V	E26	40°	80	5000	1,060	2050	35,000	4.8"	75	-	Y
PAR38	LP38/19/830/FL/D	70638	19	120V	E26	40°	80	3000	1,250	2665	40,000	5.2"	90	Y	Y
	LP38/19/850/FL/D	70639	19	120V	E26	40°	80	5000	1,200	2564	25,000	5.2"	90	-	Y



## FEATURES

- Approximately 80% energy savings vs 65W BR30
- Select models available with Energy Star qualification
- Dimmable down to 10% of total light output\*
- Lasts up to 10X longer than traditional incandescent lamps
- Available in a wide variety of color temperatures
- High CRI option enhances ambiance and colors
- Title 24 compliant model available
- Contains NO mercury
- Damp location rated



BR30 GU24

BR30

BR40



	Item #	Code	Watts	Volts	Base	Beam Bpread	CRI	CCT (Kelvin)	Initial Lumens	CBCP (cd)	Avg. Rated Life	MOL In.	Equiv Wattage	Energy Star	Dimmable
R20	LR20/8/827/D	78472	8	120	E26	106°	80	2700	525	160	25,000	3.9"	50	Y	Y
	LR20/7/830/D	<b>NEW!</b> 78548	7	120	E26	106°	80	3000	540	185	25,000	3.9"	50	Y	Y
	LR20/7/840/D	<b>NEW!</b> 78550	7	120	E26	106°	80	4000	560	190	25,000	3.9"	50	Y	Y
	LR20/7/850/D	<b>NEW!</b> 78536	7	120	E26	106°	80	5000	580	200	25,000	3.9"	50	Y	Y
BR30	LBR30/11/827/D	78477	11	120	E26	108°	80	2700	750	260	25,000	5.2"	65	Y	Y
	LBR30/10/927/D	79113	10	120	E26	108°	94	2700	650	220	25,000	5.2"	65	Y	Y
	LBR30/11/830/D	78463	11	120	E26	108°	80	3000	750	260	25,000	5.2"	65	Y	Y
	LBR30/10/840/D	<b>NEW!</b> 79541	10	120	E26	108°	80	4000	800	280	35,000	5.2"	65	Y	Y
	LBR30/10/850/D	<b>NEW!</b> 79542	10	120	E26	108°	80	5000	830	290	25,000	5.2"	65	Y	Y
GU24	LBR30WW/11/GU24/D	78464	11	120	GU24	108°	80	3000	750	260	35,000	4.5"	65	-	Y
BR40	LBR40/13/827/D	78474	13	120	E26	105°	80	2700	850	290	25,000	6.5"	65	Y	Y
	LBR40/13/830/D	78465	13	120	E26	105°	80	3000	880	300	25,000	6.5"	65	Y	Y
	LBR40/12/840/D	<b>NEW!</b> 78587	12	120	E26	103°	80	4000	970	340	25,000	6.5"	75	Y	Y
	LBR40/18/830/D	78466	18	120	E26	106°	80	3000	1,230	460	25,000	6.5"	85	Y	Y
	LBR40/17/850/D	<b>NEW!</b> 78537	17	120	E26	103°	80	5000	1,320	500	25,000	6.5"	90	Y	Y



## FEATURES

- Electronic ballast compatible – no need to bypass ballast
- Horizontal and vertical configuration
- Up to 50% energy savings over CFL
- Compatible with G24-q and GX24-q CFL base



VERTICAL



VERTICAL LONG

	Item #	Code	Watts	Volts	Base	Beam Spread	CRI	CCT (Kelvin)	Initial Lumens	Avg. Rated Life	MOL In.	Equiv Wattage
PLT STYLE	LPLT13/830/H	<b>NEW!</b> 79882	13	120-277V	G24-q	120°	83	3000	700	50,000	5.2"	26W
	LPLT13/840/H	<b>NEW!</b> 79883	13	120-277V	G24-q	120°	83	4000	700	50,000	5.2"	26W
	LPLT13/830/V	<b>NEW!</b> 79884	13	120-277V	G24-q	120°	83	3000	900	50,000	3.6"	26W
	LPLT13/840/V	<b>NEW!</b> 79885	13	120-277V	G24-q	120°	83	4000	900	50,000	3.6"	26W
	LPLT13/830/VL	<b>NEW!</b> 79886	13	120-277V	G24-q	120°	83	3000	900	50,000	4.7"	26W
	LPLT13/840/VL	<b>NEW!</b> 79887	13	120-277V	G24-q	120°	83	4000	900	50,000	4.7"	26W



## FEATURES

- Replacement options for 20W, 35W, 50W halogen MR16's
- Available in a variety of color temperatures for every application
- Can be used on magnetic or electronic transformers
- Select models available with Energy Star qualification
- Lasts up to 10X longer than traditional halogen lamps
- Contains NO mercury



	Item #	Code	Watts	Volts	Base	Beam Spread	CRI	CCT (Kelvin)	Initial Lumens	Avg. Rated Life	MOL In.	Equiv Wattage	Dimmable
<b>R12 1383</b>	L1383/3/830/NFL	79630	3	12 VAC/DC	BA15S	30°	80	3000	120	25,000	2.6"	20	-
<b>GBF</b>	LGBF/WW/3/FL	79562	3	12 VAC/DC	BA15D	30°	80	3000	115	25,000	1.8"	20	-
<b>MR11</b>	LM11/4/830/FL	77736	4	12 VAC/DC	GU4	35°	80	3000	200	25,000	1.5"	20	-
	LM11/4/850/FL	77737	4	12 VAC/DC	GU4	35°	80	3000	220	25,000	1.5"	20	-
<b>MR16</b>	LM16WW/4/NFL/C	78354	4	12 VAC/DC	GU5.3	20°	75	3000	180	25,000	2"	20	-
	LM16CW/4/NFL/C	78309	4	12 VAC/DC	GU5.3	20°	75	6000	200	25,000	2"	20	-
	LM16WW/6/FL	78236	6	12 VAC/DC	GU5.3	40°	71	3000	320	25,000	2"	35	-
	LM16CW/6/FL	78235	6	12 VAC/DC	GU5.3	40°	71	6000	400	25,000	2"	35	-
	LM16/8/830/FL/D	79983	8	12 VAC/DC	GU5.3	38°	81	3000	500	25,000	2"	50	Y
	LM16/8/840/FL/D	79985	8	12 VAC/DC	GU5.3	38°	81	4000	450	25,000	2"	50	Y
	LM16/8/850/FL/D	79984	8	12 VAC/DC	GU5.3	38°	81	5000	450	25,000	2"	50	Y
<b>GU10</b>	LGU10/6/830/D** <b>NEW!</b>	78397	6	120 VAC	GU10	40°	82	3000	400	25,000	2"	50	Y
	LGU10/6/860/D** <b>NEW!</b>	78398	6	120 VAC	GU10	40°	82	6000	450	25,000	2"	50	Y



## FEATURES

- Familiar shape perfect for household applications
- Approximately 75% energy savings vs 60W incandescent
- Select models are dimmable down to 10% of total light output\*
- Lasts up to 10X longer than traditional incandescent lamps
- Select models available with Energy Star qualification
- Available in a number of styles and wattages
- Omni-directional models provide 300° of useful light
- Contains NO mercury



GLOBE



FILAMENT STYLE



**NEW**

OMNI-DIRECTIONAL  
STYLE - GU24



ECO STYLE



	Item #	Code	Watts	Volts	Base	CRI	CCT (Kelvin)	Initial Lumens	Avg. Rated Life	MOL In.	Equiv Wattage	Energy Star	Dimmable
OMNI-DIRECTIONAL STYLE	LA19/7/827/D	<b>NEW!</b> 79642	7	120	E26	80	2700	470	25,000	4.4"	40	Y	Y
	LA19/10/827/GU24/D	<b>NEW!</b> 78552	10	120	GU24	80	2700	800	25,000	4.3"	60	**	Y
	LA19/10/827/D	<b>NEW!</b> 79643	10	120	E26	80	2700	810	25,000	4.6"	60	Y	Y
	LA19/10/830/D	<b>NEW!</b> 79648	10	120	E26	80	3000	820	25,000	4.6"	60	Y	Y
ECO STYLE	LA19/7/827/ECO/D	77752	7	120	E26	80	2700	450	25,000	4.7"	40	-	Y
	LA19/7/830/ECO/D	<b>NEW!</b> 77780	7	120	E26	80	3000	470	25,000	4.7"	40	-	Y
	LA19/7/850/ECO/D	<b>NEW!</b> 77782	7	120	E26	80	5000	510	25,000	4.7"	40	-	Y
	LA19/10/827/ECO/D	77753	10	120	E26	80	2700	800	25,000	4.7"	60	-	Y
	LA19/10/830/ECO/D	<b>NEW!</b> 77784	10	120	E26	80	3000	830	25,000	4.7"	60	-	Y
	LA19/10/850/ECO/D	<b>NEW!</b> 77786	10	120	E26	80	5000	900	25,000	4.7"	60	-	Y
FILAMENT STYLE - A17	LA17/4/827/E26-61	79941	4	120	E26	80	2700	330	10,000	4.3"	40	-	-
GLOBE	LG25/8/827/D-46	79972	8	120	E26	80	2700	420	25,000	4.3"	40	-	-



## FEATURES

- Available in many wattages and configurations for every application
- Warm, pleasing glow
- Lasts up to 10X longer than traditional incandescent lamps
- Perfect for chandeliers, wall sconces, ceiling fans
- Select models dimmable\*
- Contains NO mercury



FILAMENT STYLE



LCTF/5



LCFF/5



DIMMABLE LB11/5

	Item #	Code	Watts	Volts	Shape	Base	CRI	CCT (Kelvin)	Initial Lumens	Avg. Rated Life	MOL In.	Equiv Wattage	Dimmable
DIMMABLE	LCFC/WW/3.5/D	79622	3.5	120V	B12 Flame Tip	E12	80	3000	250	30,000	4.7"	40	Y
	LCTC/WW/3.5/D	79624	3.5	120V	B12 Blunt Tip	E12	80	3000	250	30,000	4.1"	40	Y
	LB11/5/830/E12/D	79856	4.9	120V	B11 Blunt Tip	E12**	82	3000	315	25,000	4.2"	40	Y
	LCFF/5/830/F/D <b>NEW!</b>	79841	5	120V	C11 Flame Tip	E12**	80	3000	350	25,000	4.8"	40	Y
	LCTF/5/830/F/D <b>NEW!</b>	79843	5	120V	B11 Blunt Tip	E12**	80	3000	350	25,000	4.2"	40	Y
ECONOMY	LB10WW/2/C/E12	77555	2	120V	B10 Blunt Tip	E12	74	3000	100	15,000	3.8"	15	-
	LB10WW/2/C/E26	77561	2	120V	B10 Blunt Tip	E26	74	3000	100	15,000	3.8"	15	-
FILAMENT STYLE	LB11/2/827/E12	79942	2	120V	B11 Blunt Tip	E12	80	2700	170	10,000	3.8"	25	-
	LB11/2/827/E26	79943	2	120V	B11 Blunt Tip	E26	80	2700	170	10,000	3.8"	25	-
	LB11L/2/827/E12	79944	2	120V	B11 Long	E12	80	2700	170	10,000	4.5"	25	-



## FEATURES

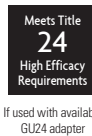
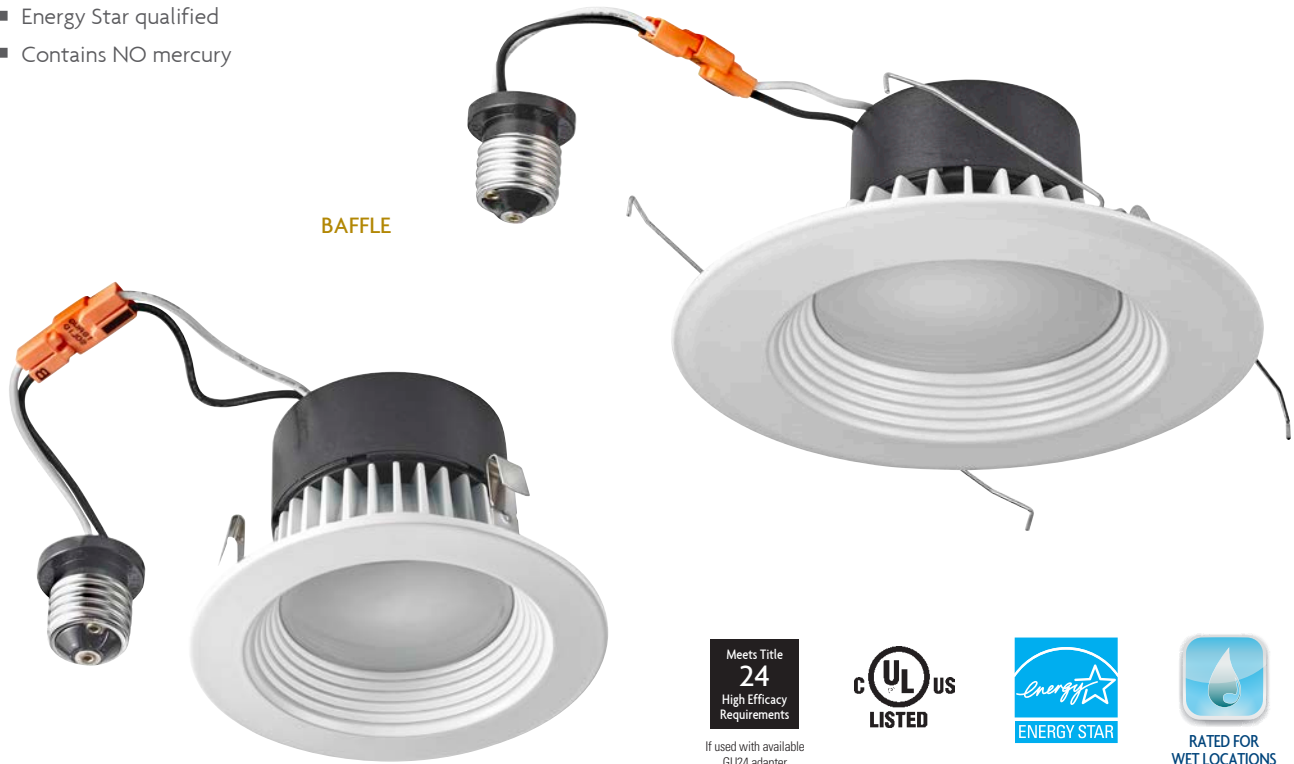
- Lasts twice as long as standard fluorescent lamps
- 2', 3' and 4' lengths
- Available in a variety of color temperatures
- Select models available with DLC certification
- Safe, easy replacement for T8 lamp & ballast systems
- Contains NO mercury
- -25°C to 45°C operating temperature range

	Item #	Code	Watts	Volts	Base	CRI	CCT (Kelvin)	Initial Lumens	Beam Spread	Avg. Rated Life	MOL In.	DLC Approved	Dimmable
T8 CLEAR BALLAST BYPASS	L2T8/40/11/U/G2	79570	11	100-277VAC	G13	82	4000	1,000	120°	35,000	24"	-	-
	L2T8/50/11/U/G2	79572	11	100-277VAC	G13	82	5000	1,100	120°	35,000	24"	-	-
	L3T8/40/15/U/G2	79576	15	100-277VAC	G13	82	4000	1,600	120°	35,000	36"	-	-
	L3T8/50/15/U/G2	79577	15	100-277VAC	G13	82	5000	1,600	120°	35,000	36"	-	-
	L4T8/35/20/U/G2	79240	20	100-277VAC	G13	82	3500	1,900	120°	35,000	48"	-	-
	L4T8/40/20/U/G3	70657	20	100-277VAC	G13	82	4000	2,100	120°	50,000	48"	DLC	-
	L4T8/50/20/U/G3	70658	20	100-277VAC	G13	82	5000	2,100	120°	50,000	48"	DLC	-
	L4T8/65/20/U/G3	79248	20	100-277VAC	G13	82	6500	2,200	120°	50,000	48"	-	-
T8 FROSTED BALLAST BYPASS	L2T8B/840/9/U/F	<b>NEW!</b> 77941	9	120-277V	G13	80	4000	1,000	240°	50,000	24"	DLC	-
	L2T8B/850/9/U/F	<b>NEW!</b> 77942	9	120-277V	G13	80	5000	1,000	240°	50,000	24"	DLC	-
	L4T8B/840/18/U/F	<b>NEW!</b> 77945	18	120-277V	G13	80	4000	1,800	240°	50,000	48"	DLC	-
	L4T8B/850/18/U/F	<b>NEW!</b> 77946	18	120-277V	G13	80	5000	1,800	240°	50,000	48"	DLC	-
	L4T8B/865/18/U/F	<b>NEW!</b> 77950	18	120-277V	G13	80	6500	1,800	240°	50,000	48"	-	-
FROSTED BALLAST DIRECT	L4T8E/840/18/U/F	<b>NEW!</b> 77947	18	Ballast Connect	G13	80	4000	1,800	240°	50,000	48"	DLC	-
	L4T8E/850/18/U/F	<b>NEW!</b> 77948	18	Ballast Connect	G13	80	5000	1,800	240°	50,000	48"	DLC	-
36W LUMINAIRE	F-LED/4/36W/40/D	<b>NEW!</b> 79858	36	100-277V	-	>80	4000	4,300	270°	50,000	47.3"	DLC	Y



## FEATURES

- Direct retrofit for existing trim/bulb combinations
- Easy installation: unit screws into socket
- Dimmable down to 10% of total light output\*
- Available in different sizes and color temperatures for every application
- Select models adjustable 20° +/-
- Energy Star qualified
- Contains NO mercury



	Item #	Code	Size	Watts	CCT (Kelvin)	CRI	Initial Lumens	Avg. Rated Life	Energy Star	Dimmable
GIMBAL	RTL/437WH/90/D	<b>NEW!</b> 79707	4"	8	3000	94	620	50,000	Y	Y
	RTL/447WH/90/D	<b>NEW!</b> 79709	4"	8	4000	95	665	50,000	Y	Y
	RTL/637WH/90/D	<b>NEW!</b> 79711	6"	12	3000	95	1,025	50,000	Y	Y
	RTL/647WH/90/D	<b>NEW!</b> 79713	6"	12	4000	95	1,100	50,000	Y	Y
SQUARE	RTL/43SQ/WH/90/D	<b>NEW!</b> 79715	4"	10	3000	95	715	50,000	Y	Y
	RTL/44SQ/WH/90/D	<b>NEW!</b> 79717	4"	10	4000	95	760	50,000	Y	Y
BAFFLE	RTL/433WH/90/D	<b>NEW!</b> 79719	4"	11	3000	90	750	50,000	Y	Y
	RTL/443WH/90/D	<b>NEW!</b> 79721	4"	11	4000	90	765	50,000	Y	Y
	RTL/RF/443WH/WH/D	70971	4"	11	4000	82	725	35,000	Y	Y
	RTL/RF/633WH/ECO/D	70982	5/6"	11	3000	83	750	36,000	Y	Y
	RTL/643WH/90/D	<b>NEW!</b> 79725	5/6"	15	4000	90	1,250	50,000	Y	Y
	RTL/633WH/90/D	<b>NEW!</b> 79723	5/6"	16	3000	90	1,155	50,000	Y	Y
	RTL/RF/643WH/WH/D	70973	5/6"	16	4000	82	1,248	40,000	Y	Y

CANS FOR USE WITH ALL RETROFIT KITS

RH4/NLED/IC/AT	79990	4"	IC/AT - NEW CONSTRUCTION
RH4/RLED/IC/AT	79991	4"	IC/AT - REMODEL
RH5/NLED/IC/AT	79996	5"	IC/AT - NEW CONSTRUCTION
RH5/RLED/IC/AT	79997	5"	IC/AT - REMODEL
RH6/NLED/IC/AT	79992	6"	IC/AT - NEW CONSTRUCTION
RH6/RLED/IC/AT	79993	6"	IC/AT - REMODEL







## FEATURES

- Surface mount to most 4" J-boxes
- Driver-On-Board technology eliminates an external power supply
- Power Factor >.99
- Dimmable\* down to 10%
- Life rating >36K hours (L70)
- Suitable for damp or wet locations for shower or outdoor enclosed locations
- Wide beam angle >105°
- Color temperature: 3000K and 4000K
- CRI >90 for exceptional color appearance
- Up to 75% Energy saving over traditional incandescent sources
- Mercury free, RoHS and No UV

6" DIMMABLE DISK LIGHT



RATED FOR  
WET LOCATIONS

	Item #	Code	Watts	Volts	CRI	CCT (Kelvin)	Initial Lumens	CBCP (cd)	Avg. Rated Life	Energy Star	Dimmable
CEILING & CLOSET LED LIGHTS	SDL4/12/930/D <b>NEW!</b>	76402	13.5	120V	90	3000	630	223	36,000	Y	Y
	SDL4/12/940/D <b>NEW!</b>	76403	13.5	120V	90	4000	630	223	36,000	Y	Y
	SDL6/15/930/D <b>NEW!</b>	76404	15	120V	90	3000	975	342	47,000	Y	Y
	SDL6/15/940/D <b>NEW!</b>	76405	15	120V	90	4000	975	342	47,000	Y	Y



**FEATURES**

- Life rating 40K hours (L70)
- Universal voltage 120-277VAC
- Base up or base down application
- Suitable for use in enclosed fixtures
- 360° optical design
- Up to 75% energy saving over traditional HID sources
- Mercury free, RoHS and UV free
- E26 base (E39 with adapter)



10.4" - 45W & 54W

**NEW**



11.4" - 75W

**NEW**

POST TOP  
LIGHTS

Item #	Code	Watts	Volts	Base	CRI	CCT (Kelvin)	Initial Lumens	Avg. Rated Life (L70)	MOL In.	Equiv Wattage
LPT27/850/INT	<b>NEW!</b> 77936	27	120-277V	E26 MED*	80	5000	2,900	40,000	8"	100W HPS
LPT36/850/INT	<b>NEW!</b> 77937	36	120-277V	E26 MED*	80	5000	3,800	40,000	9.2"	175W MH
LPT45/850/INT	<b>NEW!</b> 77938	45	120-277V	E26 MED*	80	5000	4,500	40,000	10.4"	200W MH
LPT54/850/INT	<b>NEW!</b> 77939	54	120-277V	E26 MED*	80	5000	5,600	40,000	10.4"	250W MH
LPT75/850/INT/E39	<b>NEW!</b> 78689	75	120-277V	E39 MOG	80	5000	7,875	40,000	11.4"	320W MH